

Builders Higaki Shipbuilding Co. Ltd.
 Year..... 2011
 Type General cargo vessel
 Flag..... Panama
 IMO..... 9625437
 Class:..... NK
 Ice Class:..... No
 Managers..... Ultrabulk MPP and Minibulk Services A/S
 P&I Steamship, UK
 Lakefitted:..... No



TYPE	
General cargo vessel – MPP Type	
Can trade as single or tweendecker	
Boxtype	

TONNAGE	
DWT incl TWD:	14226.09 MT
GT / NT:	9,963T/4,544 T

TANK CAPACITY	
HFO:	842.78 m ³
MGO:	132.54 m ³
Ballast:	4,075.82 m ³
Fresh Water:	548.93 m ³

DIMENSIONS	
Length:	119.88 m
Beam:	19.60 m
Draft fully loaded:	9.446 m
Air draft:	31.414 m

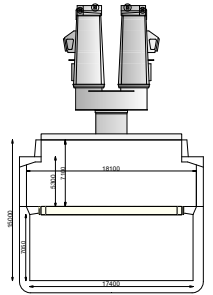
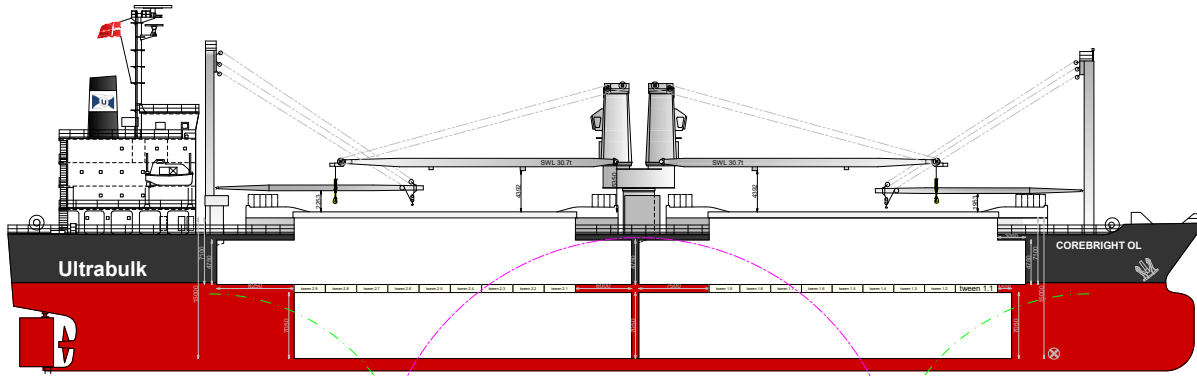
CARGO HOLD CAPACITY	
Cargo hold 1	
Tank top:	660.12 m ²
Tweendeck:	725.77 m ²
Hatchcover:	461.25 m ²
Total:	1847.14 m ²
Cargo hold 2	
Tank top:	619.08 m ²
Tweendeck:	804.55 m ²
Hatchcover:	450 m ²
Total:	1873.63 m ²
Volume	
Hold 1 bale/grain:	9271.99 / 9902.86 m ³
Hold 2 bale/grain:	9326.71 / 10028.00 m ³
Total bale/grain:	18598.70 / 19930.86 m ³
Permissible Loads	
Tanktop (Uniform load):	12.06mt/m ²
Tweendeck:	5.0mt/m ²
Hatchcover:	2.5mt/m ²
Hold Equipment	
Electrical ventilation	
Dehumidifier fitted in hold	
CO ₂ fitted	
Grain fitted	
Fitted for carrying dangerous goods	

ENGINES	
Main Engine: Makita Coproration. Man B&W 6S35MC x 1 Set, MCR: 4,200 KW x 170 RPM, NOR (90% MCR): 3,780 KW x 164 RPM	
Aux:	AC450V x 400kW x 1200 PRM x 3 Sets

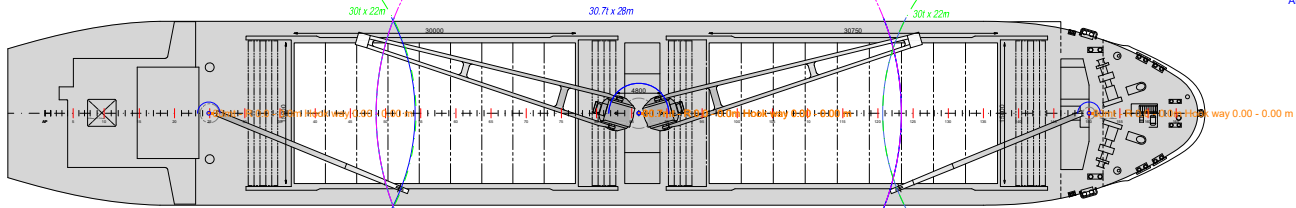
CARGO GEAR	
Cranes	
2 cranes of each 30t	
Combineable up to 60t	
Derricks: two of each 30t	
Lifting capacity	
Cranes SWL:	30.7 mt/ 28 m
Cranes combinable:	60 mt/ 28m
Derricks:	30MT-30°;26MT-15°
Containers (Hatch 2)	
No1 Hatch:	SIZE:8*8*20' 38TEU
No2 Hatch:	SIZE:8*8*20' 26TEU
Total w/o twd:	SIZE:8*8*20' 64TEU

DETAILS BELIEVED TO BE CORRECT AND GIVEN IN GOOD FAITH, BUT WITHOUT GUARANTEE / AUGUST 2024

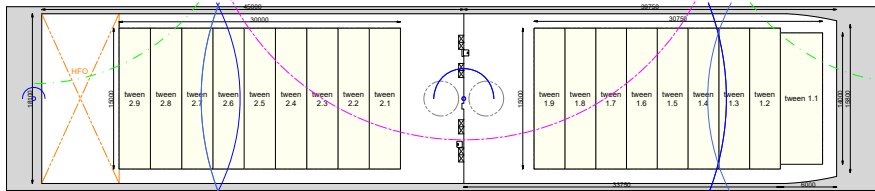




All overview Alt

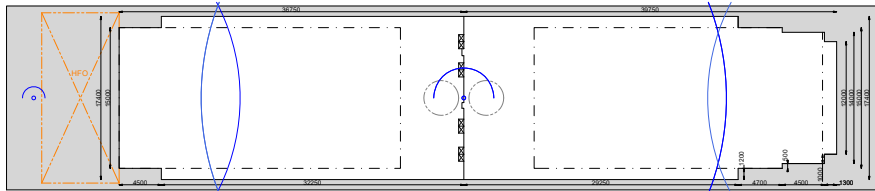


Top view at 40.8m ab Base line



Top view at 13.87m ab Base line

Max Load:
HC: 2,50mt/m²
TD: 5,00mt/m²
TT: 15,00mt/m²



Top view at 2.89m ab Base line

Max Load:
HC: 2,50mt/m²
TD: 5,00mt/m²
TT: 15,00mt/m²

