

Builders ..... Kegoya Dock Co Ltd.  
 Year ..... 2012  
 Type ..... General cargo ship  
 Flag ..... Panama  
 IMO ..... 9622710  
 Class ..... NK  
 Managers ..... Ultrabulk MPP and Minibulk Services A/S  
 P&I ..... Steamship, UK  
 Lakefitted ..... No



## TYPE

Multipurpose general cargo vessel  
 Flush tween deck (removable)  
 Semi box

## TONNAGE

DWT incl TWD: 13500 mt  
 GT / NT: 9984 / 4297 mt

## TANK CAPACITY

HFO: 728.55 m<sup>3</sup>  
 MGO: 146.82 m<sup>3</sup>  
 Ballast: 4013.11 m<sup>3</sup>  
 Fresh Water: 648.07 m<sup>3</sup>

## DIMENSIONS

Length: 124.98 m  
 LPP: 111.50 m  
 Beam: 21.00 m  
 Draft fully loaded: 9.01 m

## CARGO HOLD CAPACITY

### Cargo hold 1

Tank top: 642.36 m<sup>2</sup>  
 Tweendeck: 851.22 m<sup>2</sup>  
 Hatchcover: 452.76 m<sup>2</sup>  
 Total: 1946.34 m<sup>2</sup>

### Cargo hold 2

Tank top: 658.40 m<sup>2</sup>  
 Tweendeck: 889.7 m<sup>2</sup>  
 Hatchcover: 463.05 m<sup>2</sup>  
 Total: 2011.22 m<sup>2</sup>

### Volume

Hold 1 bale/grain: 9357/ 10282 m<sup>3</sup>  
 Hold 2 bale/grain: 9942/ 10352 m<sup>3</sup>  
 Total bale/grain: 19299/ 20634 m<sup>3</sup>

### Permissible Loads

Tanktop: 11.7 mt/m<sup>2</sup>  
 Tweendeck: 4 mt/m<sup>2</sup>  
 Hatchcover: 1.7 mt/m<sup>2</sup>

### Hold Equipment

Electrical ventilation  
 Electrical hoist for shifting tween deck covers  
 Dehumidifier fitted in hold  
 CO<sub>2</sub> fitted  
 Grain fitted  
 Fitted for carrying dangerous goods  
 A60 bulkhead

## ENGINES

### Main Engine

Type: Hanshin-Kawasaki-Man  
 B&W 6L35MC / 3900 kW

## CARGO GEAR

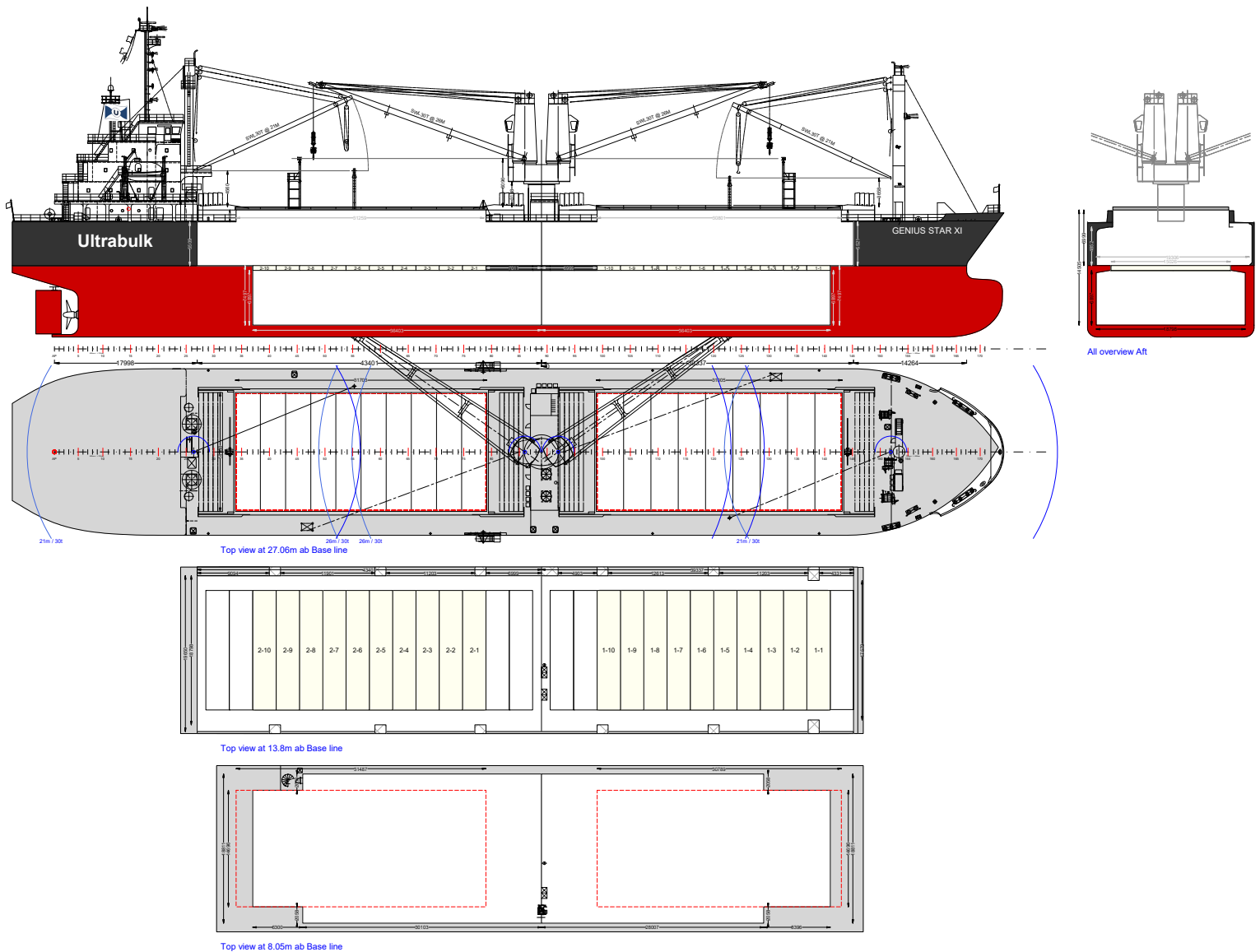
2 cranes each 30t  
 Combinable 60t

2 derricks of each 30t

Cranes combined max outreach 26m

DETAILS BELIEVED TO BE CORRECT AND GIVEN IN GOOD FAITH, BUT WITHOUT GUARANTEE / AUGUST 2024





DETAILS BELIEVED TO BE CORRECT AND GIVEN IN GOOD FAITH, BUT WITHOUT GUARANTEE / AUGUST 2024

