

Builders ..... Kanasashi Heavy Industries Co., Ltd  
 Year ..... 2009  
 Type ..... General cargo ship MPP type  
 Flag ..... Panama  
 IMO ..... 9541879  
 Class ..... NK  
 Ice Class ..... None  
 Managers ..... Ultrabulk MPP and Minibulk Services A/S  
 P&I ..... Steamship, UK  
 Lakefitted ..... No



## TYPE

Multipurpose general cargo vessel, vessel is boxtype in lower holds

## TONNAGE

DWT incl TWD: 12,916 t  
 GT / NT: 9593/4062 t

## TANK CAPACITY

HFO: 813,54 m<sup>3</sup>  
 MGO: 169,27 m<sup>3</sup>  
 Ballast: 2300,16 m<sup>3</sup>  
 Fresh Water: 548,64 m<sup>3</sup>

## DIMENSIONS

Length: 120,00 m  
 LPP: 111,50 m  
 Beam: 21,20 m  
 Draft fully loaded: 8,82 m  
 Air draft: 37,77 m

## CARGO HOLD CAPACITY

### Hold no 1

Tanktop: 698 m<sup>2</sup>  
 Tweendeck: 800 m<sup>2</sup>  
 Hatch cover: 438 m<sup>2</sup>  
 Total: 1936 m<sup>2</sup>

### Hold no 2

Tanktop: 679 m<sup>2</sup>  
 Tweendeck: 800 m<sup>2</sup>  
 Hatch cover: 438 m<sup>2</sup>  
 Total: 1917 m<sup>2</sup>

### Cargo hold 1

Lower cargo hold: 5443 m<sup>3</sup>  
 Upper cargo hold: 5047.2 m<sup>3</sup>  
 Total: 10490.2 m<sup>3</sup>

### Cargo hold 2

Lower cargo hold: 5257.7 m<sup>3</sup>  
 Upper cargo hold: 5094.8 m<sup>3</sup>  
 Total: 10352.5 m<sup>3</sup>  
 Grand total: 20843 m<sup>3</sup>

### Permissible Loads

Tanktop: 117.60 KN/ m<sup>2</sup>  
 Tweendeck: 37.00 KN/ m<sup>2</sup>  
 Hatch cover: 14.70 KN/ m<sup>2</sup>

### Hold Equipment

The ship has dehumidifier in holds No1 & No2 total 2sets  
 Co2 fitted - fitted for the carriage of dangerous goods

## ENGINES

### Main Engine

Type: Hanshin b&w 6I35mc mark 6 x 1 set

## CARGO GEAR

2 cranes of each 30t  
 Combineable up to 60t

Min outreach from center of crane base: 6.875m

No.1 & no.2 combined: 4.40m

Max outreach from center of crane base: 34,75m

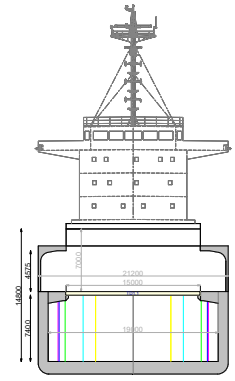
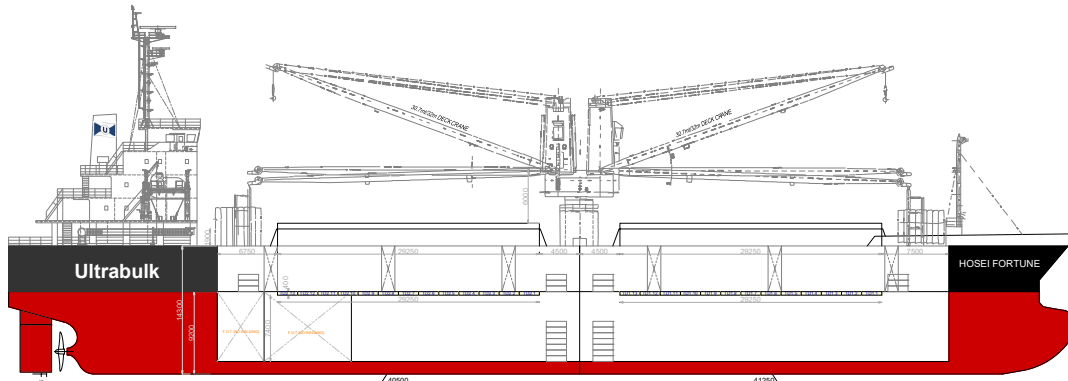
No.1 & no.2 combined: 32m

Max outreach from ship's rail: 23,75 m

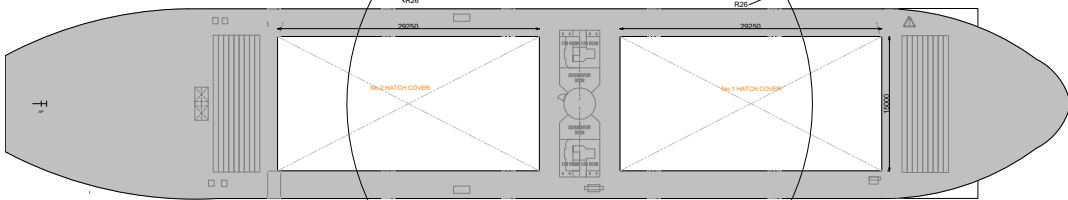
No.1 & no.2 combined: 21.40m

DETAILS BELIEVED TO BE CORRECT AND GIVEN IN GOOD FAITH, BUT WITHOUT GUARANTEE / AUGUST 2024

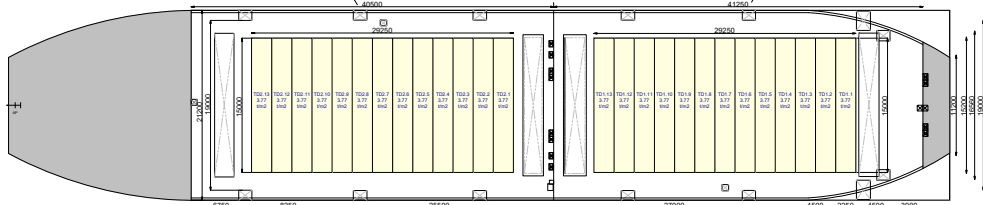




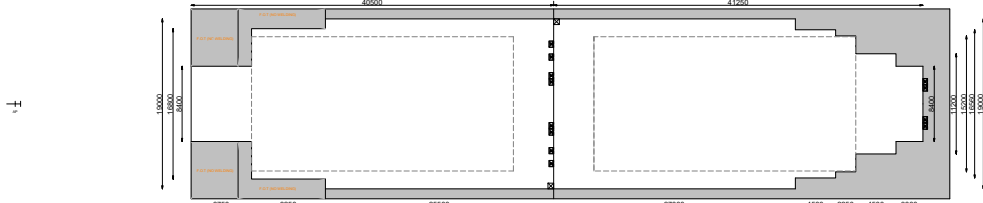
Front view looking aft



Top view at 30m ab Base line



Top view at 14m ab Base line



Top view at 8m ab Base line

