

Builders..... Higaki Shipbuilding Co., Ltd
 Year..... 2018
 Type..... General cargo ship MPP type
 Flag..... Panama
 IMO 9843015
 Class..... NK
 Ice Class..... No
 Managers..... Ultrabulk MPP and Minibulk Services A/S
 P&I..... Steamship UK
 Lakefitted..... No



TYPE

Multipurpose general cargo vessel, vessel is boxtype in lower holds

TONNAGE

DWT incl TWD: 14034 MT
 GT / NT: 9992 / 4356 MT

TANK CAPACITY

FO: 612 m³
 D: 198m³
 Ballast: 4198 m³
 Fresh Water: 533 m³

DIMENSIONS

Length: 127.70 m
 LPP: 119.50 m
 Beam: 19.60 m
 Draft fully loaded: 9465 m

CARGO HOLD CAPACITY

Cargo hold 1

Lower hold: 668 m²
 Tweendeck: 722 m²
 Hatchcover: 495 m²
 Total: 1885 m²

Cargo hold 2

Lower hold: 577m²
 Tweendeck: 709 m²
 Hatchcover: 416 m²
 Total: 1702 m²

Volume hold 1

Lower hold bale/grain: 4945/4830 m³
 Upper tweendeck bale/grain: 5138/4682 m³
 Total bale/grain: 19146/18021 m³

Volume hold 2

Lower hold bale/grain: 4268/4178 m³
 Upper tweendeck bale/grain: 4794/4330m³
 Total bale/grain: 19146/18021 m³

Strength

Tanktop: 15 mt/m²
 Tweendeck: 3.9 mt/m²
 Hatchcover: 3.9 mt/m²

Hold Equipment

Electrical ventilated, CO² fitted, a60 bulk head, Australian hold ladder

ENGINES

Main Engine: 2-cycle single acting, cross-head type diesel engine model 6s35me-b9.3

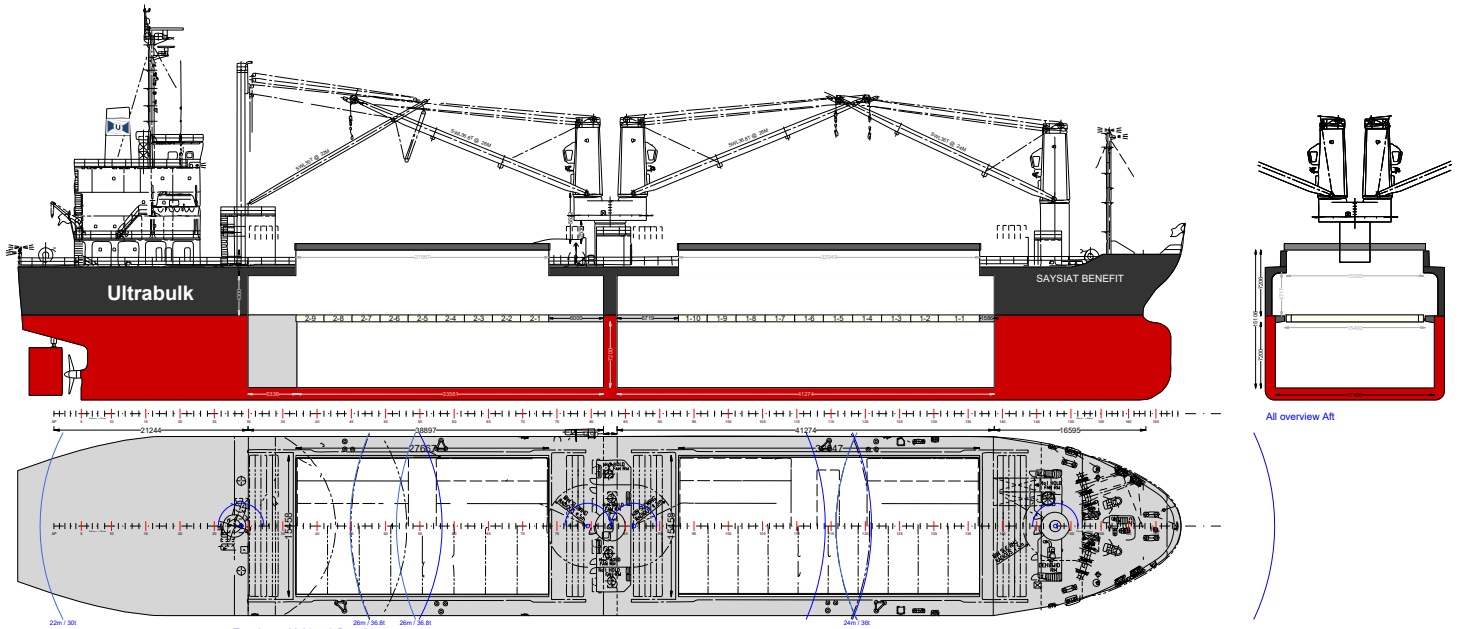
CARGO GEAR

Cranes: 3

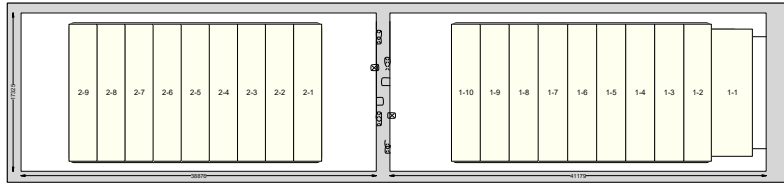
1 single crane of: 36 t
 2 twin cranes of each: 36,8 t
 Combinable: 72 t

DETAILS BELIEVED TO BE CORRECT AND GIVEN IN GOOD FAITH, BUT WITHOUT GUARANTEE / SEPTEMBER 2024

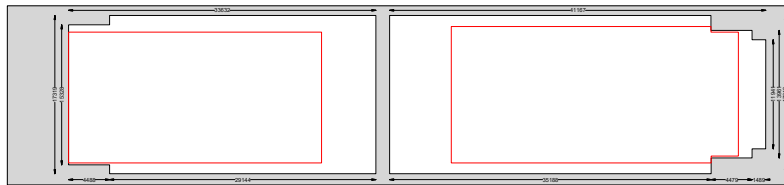




Top view at 32.61m ab Base line



Top view at 16.21m ab Base line



Top view at 7.99m ab Base line

