

Builders ..... Higaki Shipbuilding Ltd.  
 Year ..... 2011  
 Type ..... General cargo ship  
 Flag ..... Panama  
 IMO ..... 9606663  
 Class ..... NK  
 Ice Class ..... No  
 Managers ..... Ultrabulk MPP and Minibulk Services A/S  
 P&I ..... Steamship UK  
 Lakefitted ..... No



### TYPE

Multipurpose general cargo vessel  
Semibox

### TONNAGE

DWT incl TWD: 14260.39 MT  
GT / NT: 9963 MT

### TANK CAPACITY

HFO: 842.78 m<sup>3</sup>  
MGO: 132.54 m<sup>3</sup>  
Ballast: 4075.82 m<sup>3</sup>  
Fresh Water: 548.93 m<sup>3</sup>

### DIMENSIONS

Length: 127.67 m  
LPP: 119.50 m  
Beam: 19.60 m  
Draft fully loaded: 9.446 m  
Air draft: 41.0 m

### CARGO HOLD CAPACITY

#### Cargo hold 1

Tank top: 653.25 m<sup>2</sup>  
Tweendeck: 730.05 m<sup>2</sup>  
Hatchcover: 467.25 m<sup>2</sup>  
Total: 1850.55 m<sup>2</sup>

#### Cargo hold 2

Tank top: 630.45 m<sup>2</sup>  
Tweendeck: 737.10 m<sup>2</sup>  
Hatchcover: 462.00 m<sup>2</sup>  
Total: 1829.55 m<sup>2</sup>

#### Volume

Hold 1 bale/grain: 9271.99 / 9902.86 m<sup>3</sup>  
Hold 2 bale/grain: 9326.71 / 10028.00 m<sup>3</sup>  
Total bale/grain: 18598.70 / 19930.86 m<sup>3</sup>

#### Permissible Loads

Tanktop: 12.06 mt/m<sup>2</sup>  
Tweendeck: 5.0 mt/m<sup>2</sup>  
Hatchcover: 2.5 mt/m<sup>2</sup>

#### Hold Equipment

Electrical ventilation  
Dehumidifier fitted in hold  
CO<sub>2</sub> fitted  
Fitted for carrying dangerous goods

### ENGINES

**Main Engine:** Mitsui-man B&W MC engines / 2-cycle single acting cross head type man B&W 4200KW

### CARGO GEAR

#### Cranes: 2

Derricks : 2

#### Lifting capacity

Cranes SWL :	30.7	mt/	m
Cranes combinable:	60.0	mt/	m
Derricks	30.0	mt/	m

#### Containers (Hatch 2)

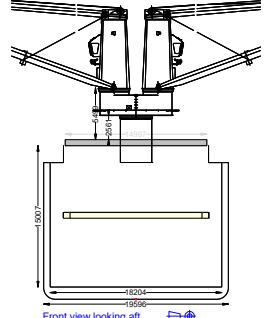
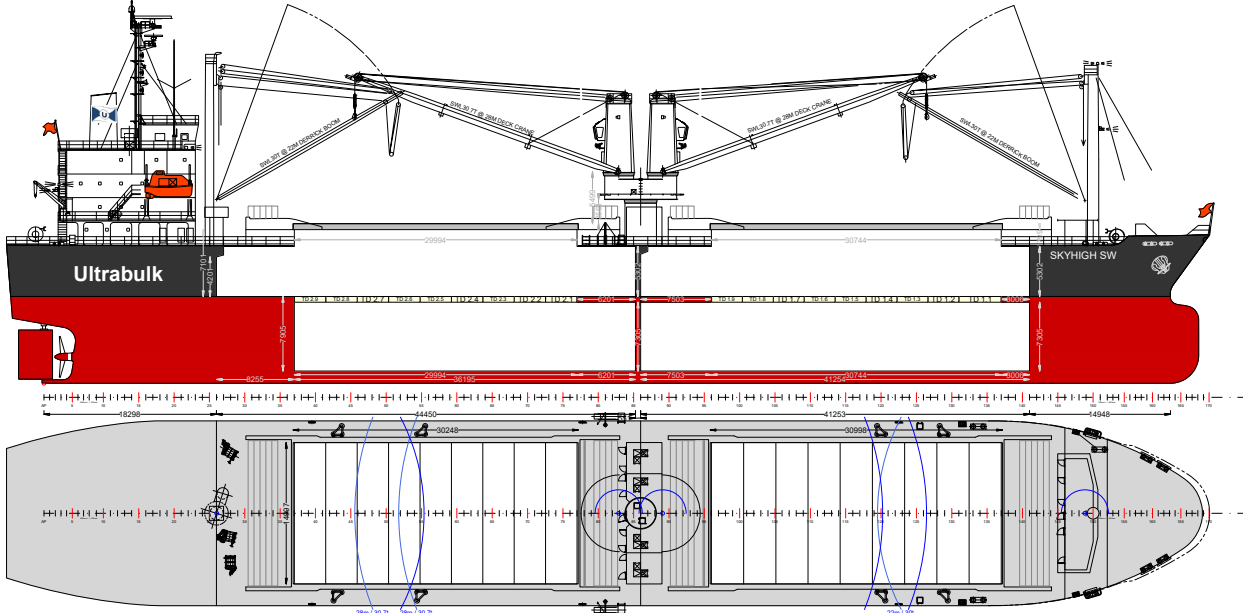
Total w/o twd	40ft(24t)	TEU
No.1 on hatch:		13n
No.2 on hatch:		19n
Total:		32n

#### Hatch sequence

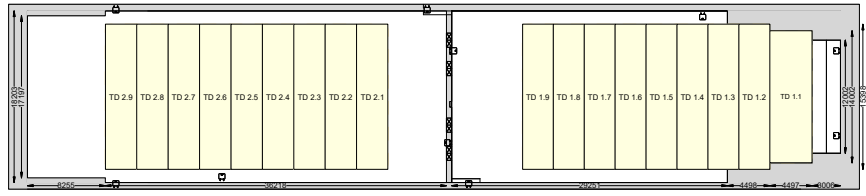
No.1 & No.2

DETAILS BELIEVED TO BE CORRECT AND GIVEN IN GOOD FAITH, BUT WITHOUT GUARANTEE / AUGUST 2024

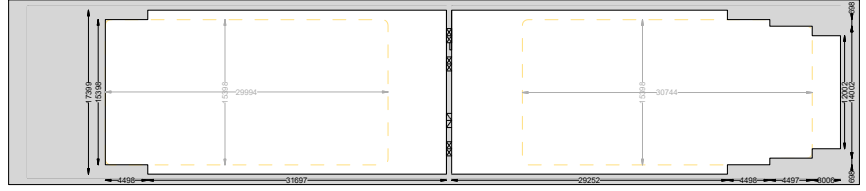




Top view at 32m ab Base line



Top view at 14m ab Base line



Top view at 6m ab Base line

