

Builders .....Kyokuyo chofu shipyard  
 Year .....2007  
 Type .....Multipurpose – semi open hatch box  
 Flag .....Panama  
 Home port.....Nassau  
 IMO .....9528720  
 Class .....Rina Class  
 Ice Class.....None  
 Managers.....Ultrabulk MPP A/S, Copenhagen (Denmark)  
 P&I.....Steamship, UK  
 Lakefitted .....No



### TYPE

Multipurpose semi open hatch box type

### DIMENSIONS

Length	136,4 m
Beam	21,2 m
Draft fully loaded	8,62 m ssw
DWAT	14.141 T

### TONNAGE

DWAT	3.517mt
Int'l tonnage	9,177 GT / 4,751 NT

### TANK CAPACITY

HFO	882,81 m <sup>3</sup>
MGO	120,62 m <sup>3</sup>
Ballast	6.297,44 m <sup>3</sup>
Fresh Water	850,00 m <sup>3</sup>

### CARGO GEAR

Cranes	2 x 30t
Placed at starboard side	

### CARGO HOLDS

4 holds/4 hatches

Hatch size :

No.1 :	16.10 m X 12.60 m
No.2 :	24.85 m X 17.60 m
No.3 :	24.85 m X 17.60 m
No.4 :	15.80 m X 17.60 m

Hold capacity :

No.1 :	3,317 cbm
No.2 :	5,162 cbm
No.3 :	5,162 cbm
No.4 :	3,447 cbm

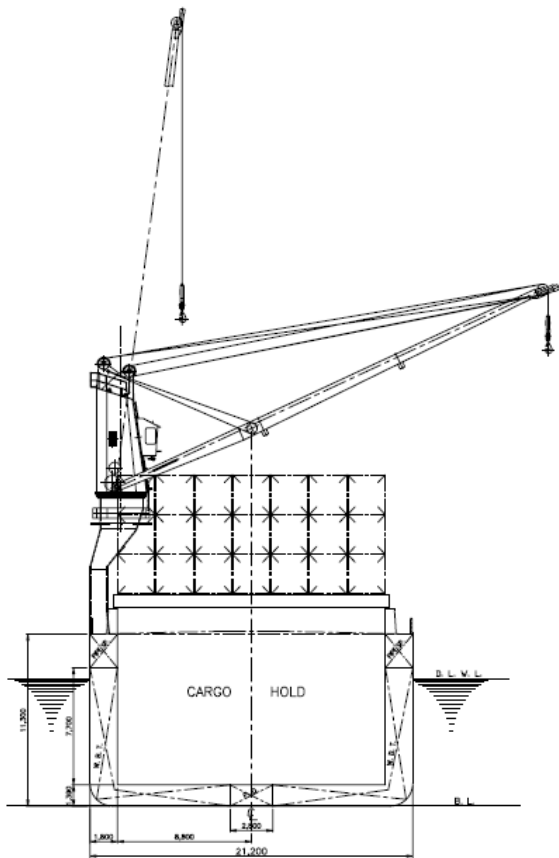
Total grain	17088 m <sup>3</sup>
Height of hold	11,56 m
CO <sub>2</sub> fitted	YES

### CONTAINER / OTHERS

Container capacity	177 teu on deck
Bow troster	
Cement holes fitted	

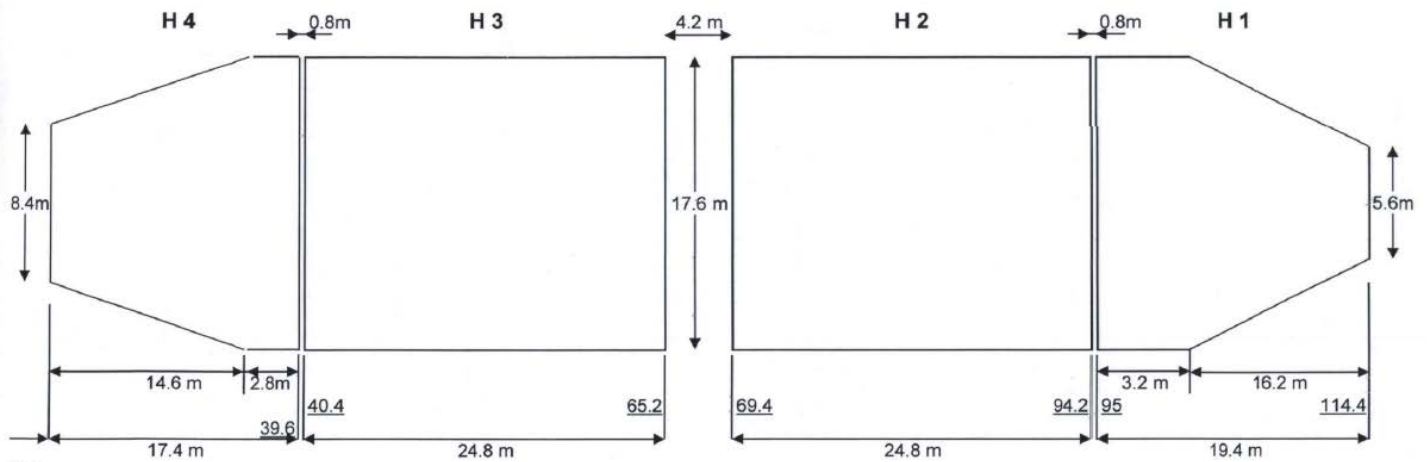
DETAILS BELIEVED TO BE CORRECT AND GIVEN IN GOOD FAITH, BUT WITHOUT GUARANTEE / JUNE 2021





CARGO HOLD DIMENSIONS	
Cargo hold no 1	19.6 x 17.6 x 11.5 m
Cargo hold no 2	25.2 x 17.6 x 11.5 m
Cargo hold no 3	25.2 x 17.6 x 11.5 m
Cargo hold no 4	17.5 x 17.6 x 11.5 m

**HOLDS DIMENSIONS AND CAPACITIES**



Dist. from AP 22.2m

CARGO HOLD	FULL CAPACITY GRAIN (m3)	FULL CAPACITY BALE (m3)	LCG (m)	VCG (m)	
HOLD No. 1	3317.94	3253.48	-41.05	7.13	103.76
HOLD No. 2	5162.27	5162.27	-19.13	7.17	82.54
HOLD No. 3	5164.01	5164.01	10.35	7.17	52.85
HOLD No. 4	3447.44	3401.22	31.84	7.27	31.97

HIGH OF HOLD 11.56m

