

Builders Damen shipyard
 Type Open hatch
 Flag Dutch
 Home port Alkmaar (Holland)
 Class Bureau veritas
 Ice Class A1
 Managers Ultrabulk MPP A/S, Copenhagen (Denmark)
 P&I Steamship, UK
 Lakefitted Yesterday's



TYPE

Open hatch, fully box, double skinned ice class 1A
 Tweendecker convertible into single decker

DIMENSIONS

| | |
|--------------------|-------------|
| Length | 142,95 m |
| Beam | 18,9 m |
| Draft fully loaded | 7,945 m ssw |
| Air draft | 35 m |

TONNAGE

| | |
|-------|---------------------|
| DWT | 12.00t |
| Gt/nt | 8,999 GT / 4,585 NT |

TANK CAPACITY

| | |
|---------------|----------------------|
| VLSFO | 699 m ³ |
| MGO | 257 m ³ |
| Water ballast | 4.717 m ³ |
| Fresh Water | 77 m ³ |

CARGO GEAR

2 cranes fixed on starboard side each 80t at reach of upto 14 m
 Combined upto 160t (no spreader onboard)

CARGO HOLDS

No.1 : 245.372 cbft with tweendeck pontoons stored in hold
 No.2 : 373.629 cbft with tweendeck pontoons stored in hold

Volume:

| | |
|-------------|------------------------|
| Hold No.1 : | 40.89 x 15.8 x 12.10 m |
| Hold No.2 : | 55.86 x 15.8 x 12.1 m |
| No.3 : | 5,162 cbm |
| No.4 : | 3,447 cbm |

HOLD EQUIPMENT

Electrical ventilated 30 a/c per hour

The vessel is equipped with a full tweendeck, consisting of loose tweendeck pontoons which can be used as artificial bulkheads

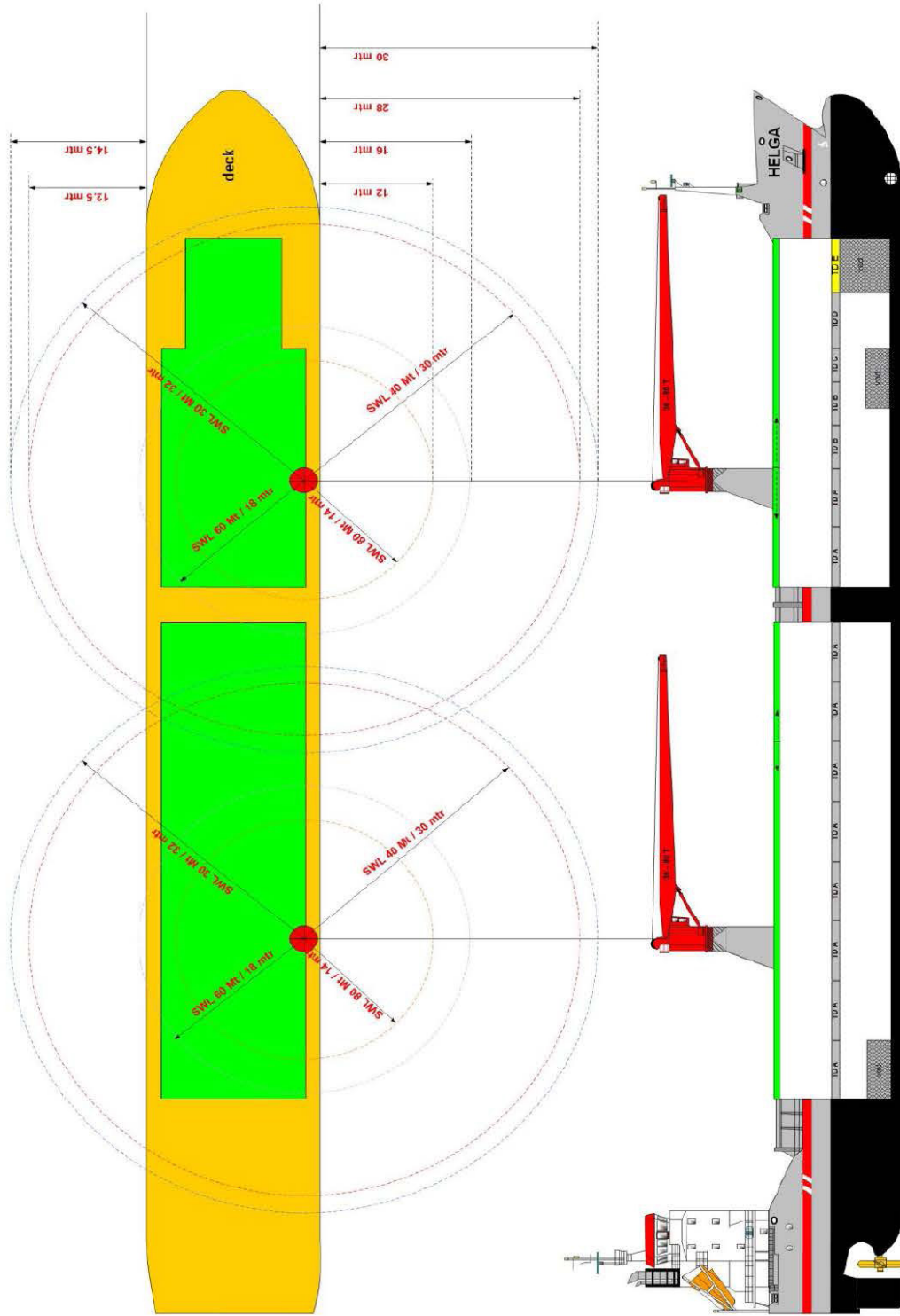
Container intake 686 teu – 80 reefer plugs connection (on deck) –
 Not fitted

| | |
|----------------------|-----------|
| Bowtruster : | Yes |
| Co2 fitted : | Yes |
| Dangerous cargo dg : | Yes |
| A60 bulkhead : | Yes |
| Hatch type : | Macgregor |

DETAILS BELIEVED TO BE CORRECT AND GIVEN IN GOOD FAITH, BUT WITHOUT GUARANTEE / NOVEMBER 2021



Crane outreaches DAMEN 12000t - type



DETAILS BELIEVED TO BE CORRECT AND GIVEN IN GOOD FAITH, BUT WITHOUT GUARANTEE / NOVEMBER 2021

