

Builders	Kanasashi Heavy Industries Co.
Year	2009
Type	Multi-purpose – tweendecker
Flag	Panama
IMO	9542867
Class	Bureau Veritas
Ice Class	None
Managers	Ultrabulk MPP A/S, Copenhagen (Denmark)
P&I	Steamship, UK (Owners Swedish club)
Lakefitted	No



TYPE

Multi-purpose tweendecker
Box in lower holds

DIMENSIONS

Length	119,99 m
Beam	21,2 m
Draft fully loaded	8,465 m ssw

TONNAGE

DWAT	12,005 mt
Int'l tonnage	9,589 GT / 3,725 NT

CARGO GEAR

2 cranes of each and 2 derricks of each	30,7t combo 60t 30t
--	------------------------

CARGO HOLDS

Dimensions (m):	Hatch (L / W):	Hold (L / W / H)*:	Box shape:
No. 1 (Upper)	29.25 x 15.00	41.25 x 13.20(fwd)/ 19.00(aft)*4.20	Yes
No. 1 (Lower)	29.25 x 15.00	41.25 x 8.40(fwd)/ 19.00(aft)*7.02	Yes
No. 2 (Upper)	29.25 x 15.00	40.50 x 19.00(fwd)/ 12.60(aft)*4.20	Yes
No. 2 (Lower)	29.25 x 15.00	40.50 x 19.00(fwd)/ 8.40(aft)*7.02	Yes
Total grain/bale:			
20843/19845 m3			

CO₂ fitted Yes

CONTAINER / OTHERS

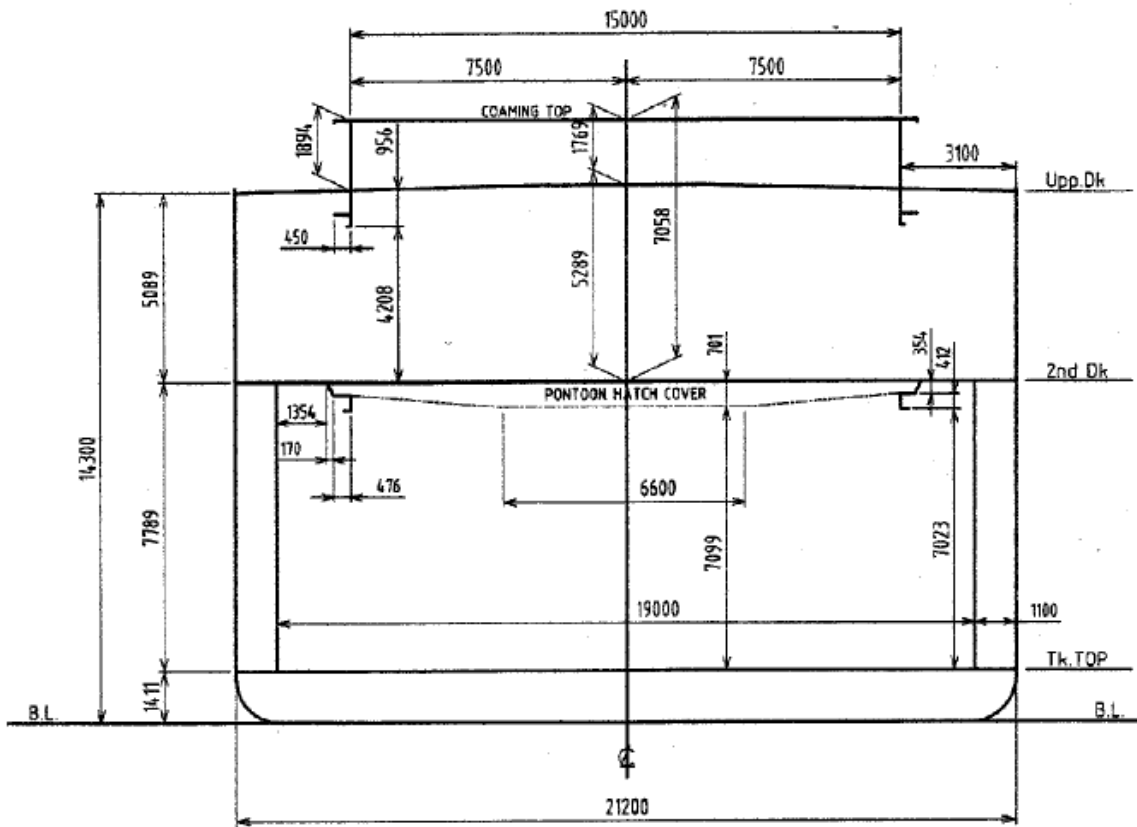
Container capacity 177 teu on deck

The ship is friendly for loading of containers but has no fittings onboard.

DETAILS BELIEVED TO BE CORRECT AND GIVEN IN GOOD FAITH, BUT WITHOUT GUARANTEE / AUGUST 2022



No.1- 2 CARGO HOLD



DETAILS BELIEVED TO BE CORRECT AND GIVEN IN GOOD FAITH, BUT WITHOUT GUARANTEE / AUGUST 2022

